



Cape Elizabeth, Falmouth, Freeport, Fryeburg, Gray NG, Greely, Merriconeag, NYA, Waynflete, Yarmouth

**Day 1: Wednesday, February 4, 2015**

5k Classic – Libby Hill - Gray  
3:00pm Boys Start – Wave Start  
4:00pm Girls Start – Wave Start

**Day 2: Saturday, February 7, 2015**

5k Skate – Stark’s Hill – Fryeburg  
10:00am Boys Start – Pursuit Start  
11:00am Girls Start – Pursuit Start

Awards at Stark’s 12:30pm  
Course Map Below

**Stark’s Directions & Parking:** Map Below

**Parents:** There will be a drop off for tailgate supplies at Stark’s but all parking will be in the outer lots. Thank you.

**RACE SPECTATORS**

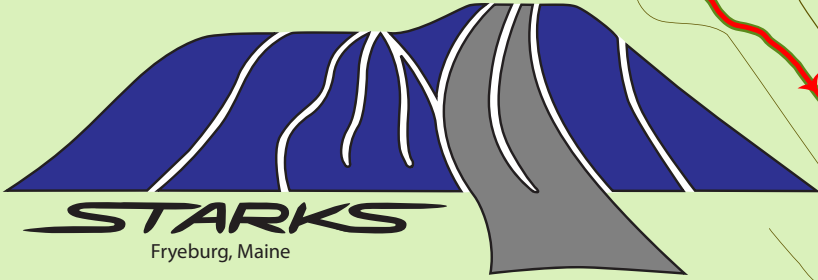
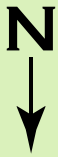
**Please Read**

Anyone not currently racing is a spectator.

Spectators are welcome on the race course with the following rules:

- \*Ski only in the direction on the race.
- \*Walk only on the edges on the trail. Walking on the trail damages it for the racers. This includes snowshoes.
- \*Do not bring dogs on the trails.
- \*Stand off the course to cheer.
- \*Do not pass racers or ski close behind them.
- \*Do not skate ski over classic tracks.

Thank you and enjoy the races!

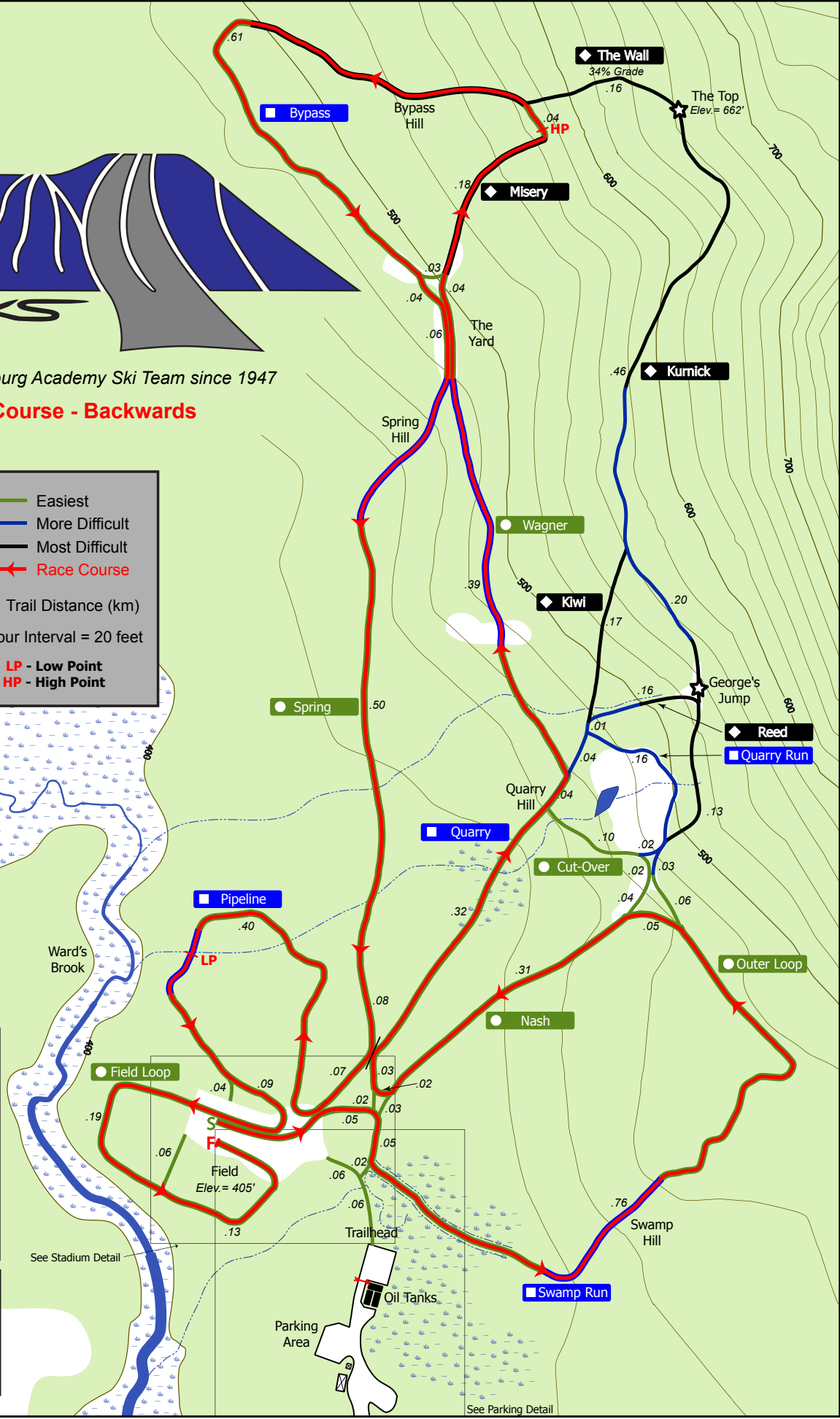
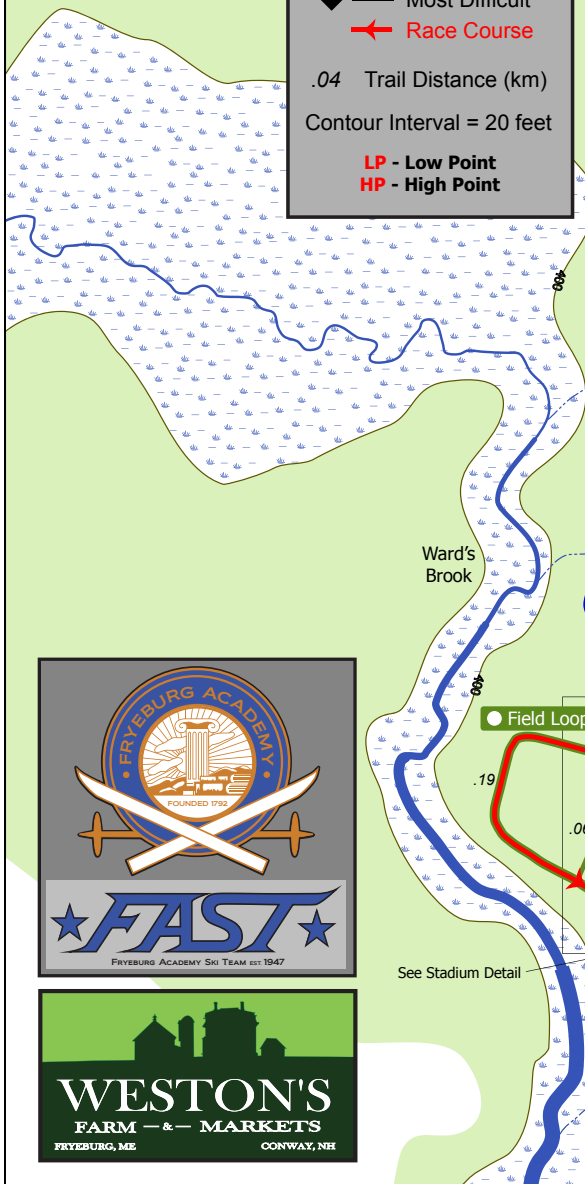


Fryeburg, Maine

Home to the Fryeburg Academy Ski Team since 1947

### 4.91k Course - Backwards

	Easiest
	More Difficult
	Most Difficult
	Race Course
.04 Trail Distance (km)	
Contour Interval = 20 feet	
	Low Point
	High Point



See Parking Detail



———> Race Course  
 - - - V - Boards  
 ——— Hard Fence  
 ····· Pin Flags  
 x x x x x Whiskers

WMCC - Skate Pursuit  
 4.91k Backwards - Stadium





Stark's Stadium

● Field Loop

Trailhead

Porta-Potties

Officials Parking

■ Swamp Run

Oil Tanks

Bus Parking #1

Drop Off

Bus Parking #2

B & C Collision Center

Bus Parking #3

Spectator Parking

FAIR STREET

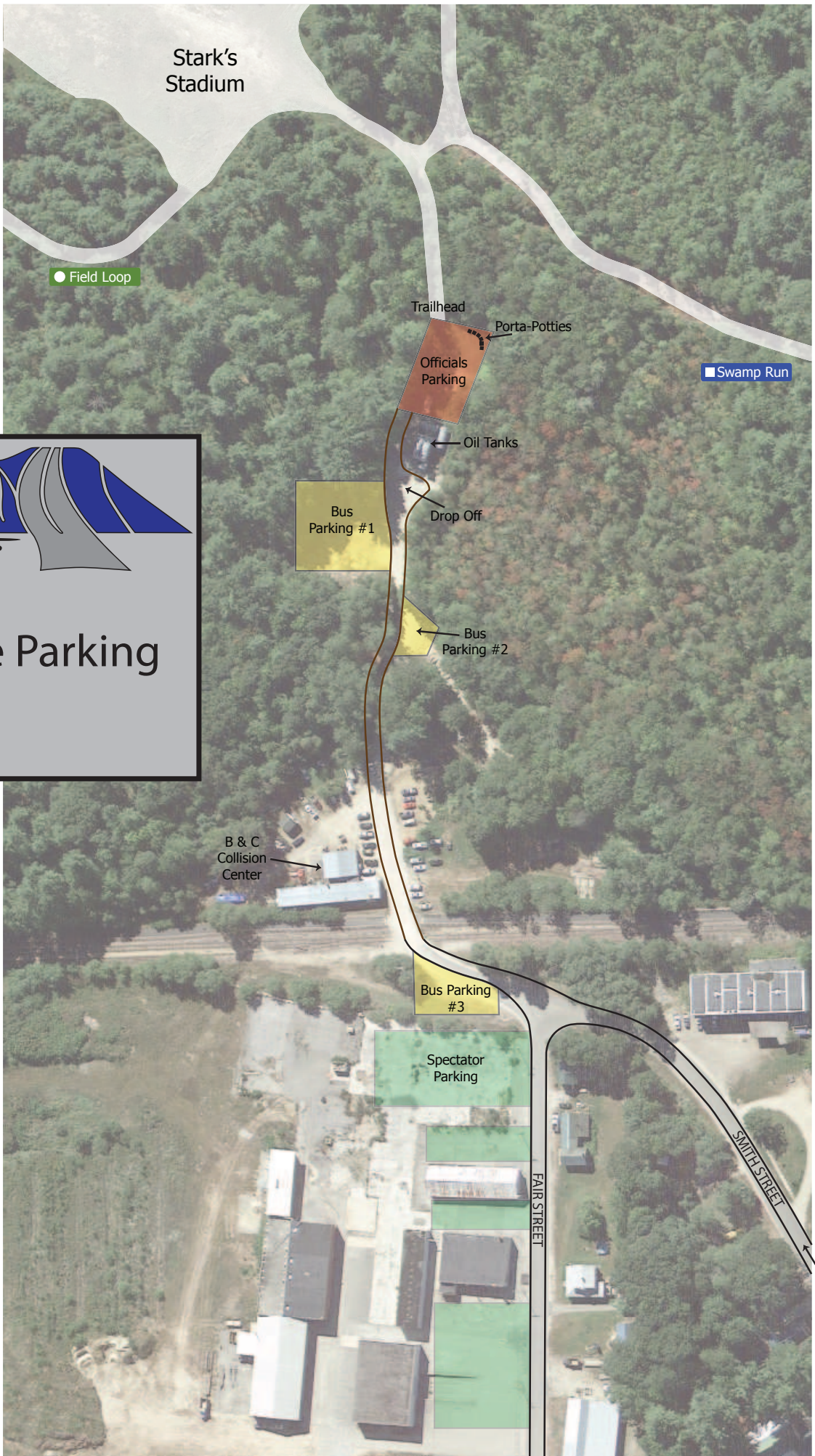
SMITH STREET

From Fryeburg Village

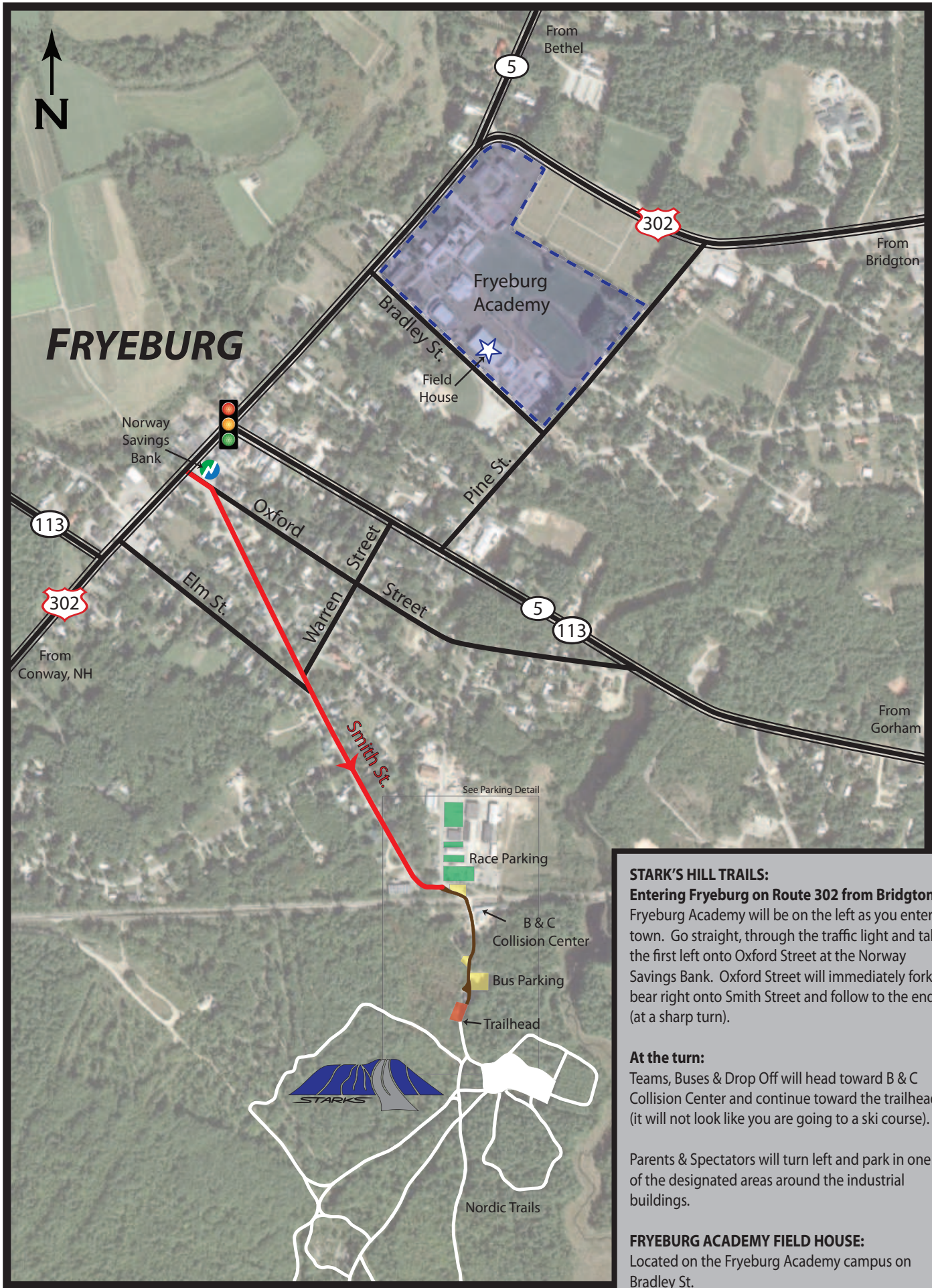


**STARK'S**  
Fryeburg, Maine

# Ski Race Parking







**STARK'S HILL TRAILS:**

**Entering Fryeburg on Route 302 from Bridgton:**  
 Fryeburg Academy will be on the left as you enter town. Go straight, through the traffic light and take the first left onto Oxford Street at the Norway Savings Bank. Oxford Street will immediately fork, bear right onto Smith Street and follow to the end (at a sharp turn).

**At the turn:**  
 Teams, Buses & Drop Off will head toward B & C Collision Center and continue toward the trailhead (it will not look like you are going to a ski course).  
 Parents & Spectators will turn left and park in one of the designated areas around the industrial buildings.

**FRYEBURG ACADEMY FIELD HOUSE:**  
 Located on the Fryeburg Academy campus on Bradley St.