

Advantages of Bond Brook Area for Nordic Skiing

Easy Access to City Services
(lodging, food, entertainment)

Terrain ideal for FIS certified trails

Water availability for snowmaking

Large stadium area with parking

4 Season Recreational Use
(hiking, mountain biking)

Connection between UMA Trails and
Kennebec Rail Trail possible

Easy access to Public Works for equipment
maintenance

Lodge use - offices, conferences, weddings

Allows for most current uses



1.25 Km Sprint Loop certifiable
for classic sprints



A Proposal for
A Nordic Ski and
Competition Center

For the
Bond Brook Property

For more information send email to
Bill Rogers at wdrogers@pol.net

8+ kilometers

FIS Certifiable Trails

- 1.25 K Sprint Loop
- (2) 2.5 K Loops
- (2) 3.75 K Loops
 - 5 K
 - 7.5 K

5 Km Specifications

- TC 180 m
- MC 39 m
- HD 59 m

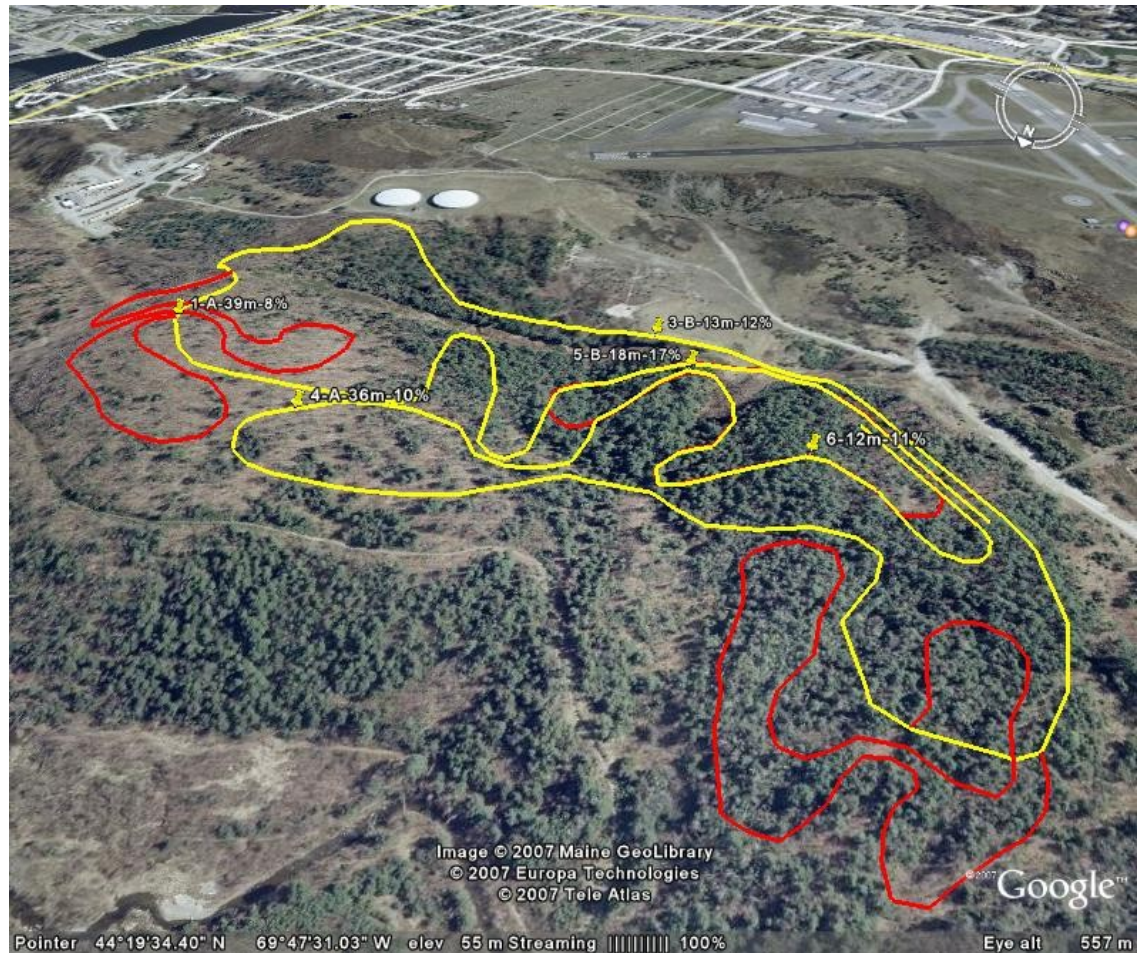
2 A Climbs

- 39 m
- 36 m

4 B Climbs

- 20 m
- 13 m
- 18 m
- 12 m

Snowmaking on 5 Km Loop, Stadium and Sprint Loop



Terrain view image of proposed Bond Brook Trail System looking Southeast

5 Km loop highlighted in Yellow
2 1.25 Km loops (7.5 Km total) highlighted in Red
Stadium area to right (3 parallel trails)